

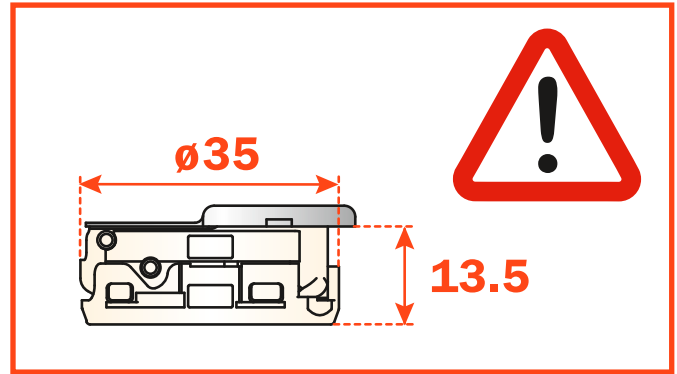
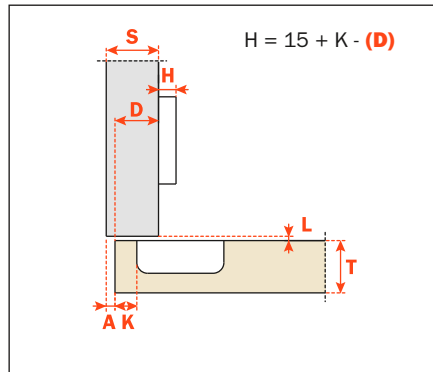
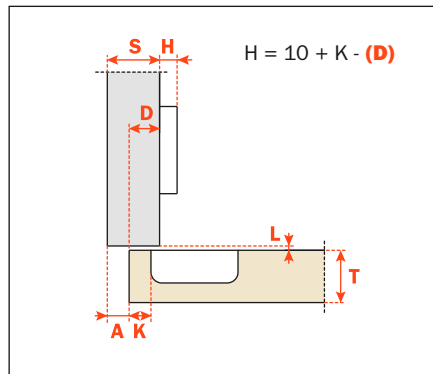
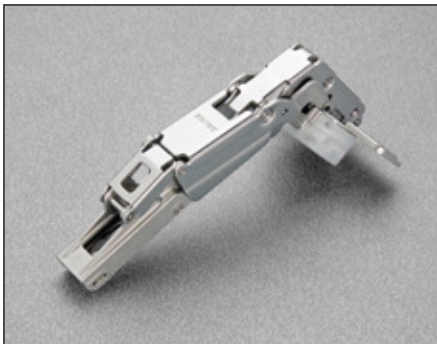
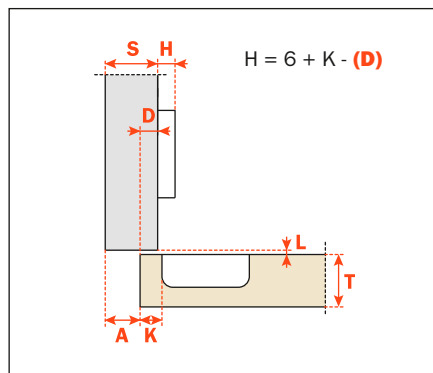
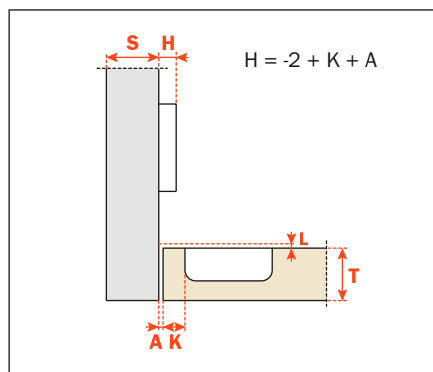
Packing

Boxes 100 pcs.
Pallets 2.400 pcs.

Use these formulas to determine the type of hinge arm, the drilling distance "K" and the height of the mounting plate "H" which is necessary to solve each application problem.

To limit the opening of the hinge, see page 354 chapter "Accessories".

Use the tables "Drillings and fixings" at page 47 to complete the code number of the desired hinge.

**Arm 0****C2_MAD9****Arm 5****C2_MDD9****Arm 9****C2_MGD9****Arm 17****C2_MPD9**